



Icy Flame Solar Tech

clean energy revolution



COMPANY PROFILE

www.icyflame.co.ke

2025

Table Of Contents

02	<u>About Company</u>
03	<u>Welcome Message</u>
04	<u>Vision & Mission</u>
05	<u>Domestic Solar Solutions</u>
06	<u>Solar Heating</u>
07	<u>Solar Lighting</u>
08	<u>Commercial Solutions</u>
09	<u>Innovation & Technology</u>
10	<u>Projects Showcase</u>



About Company

At Icy Flame Solar Tech, we proudly stand at the forefront of the solar energy revolution. Our journey is one of pioneering innovation, where we harness the immense power of the sun to craft sustainable and transformative energy solutions. What defines us is not just our commitment to cutting-edge technology but also our unwavering dedication to environmental responsibility.

In an era where sustainable practices are crucial, we have emerged as leaders in the solar industry, striving to redefine the way we harness and utilize energy. Our ethos revolves around the belief that solar technology is not just a solution for today but a gateway to a more sustainable and prosperous tomorrow.

In every project, from solar panels to lighting systems, we infuse a spirit of innovation, pushing the boundaries of what solar energy can achieve. Our mission is not just to provide solar solutions; it is to be the catalyst for a cleaner, greener future. Choose Icy Flame Solar Tech and join us on this journey towards a world where solar power is not just an option but the heartbeat of sustainable energy evolution.



Welcome Message



Dear Valued Partners and Clients,
Welcome to Icy Flame Solar Tech, where we envision a world illuminated by clean and sustainable solar energy. We are excited about the possibilities that solar technology brings, and we are dedicated to providing cutting-edge solutions for a brighter, greener future.

Joseph Karungo CEO



Vision & Mission

Vision

To be at the forefront of the solar revolution, creating a world where clean and renewable energy powers our future.

Mission

To deliver innovative solar solutions, empower communities with sustainable energy, and contribute to a greener planet.



Domestic Solar Solutions

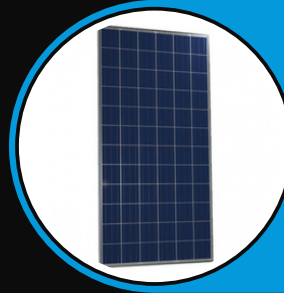
At Icy Flame Solar Tech, we offer an array of cutting-edge solar solutions tailored to meet the unique needs of both commercial and domestic spaces. Our commitment to sustainable energy is reflected in the diversity of products we provide.

Monocrystalline Solar Panels



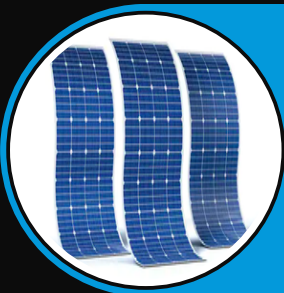
- Efficiency: High
- Aesthetics: Sleek and black, making them visually appealing.
- Space Efficiency: Require less space due to higher efficiency.

Polycrystalline Solar Panels



- Efficiency: Moderate
- Aesthetics: Blue color and less uniform appearance.
- Cost: Typically more affordable than monocrystalline panels.

Thin-Film Solar Panels



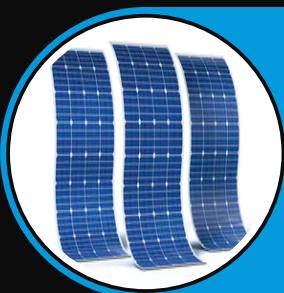
- Flexibility: Lightweight and flexible, suitable for unconventional surfaces.
- Efficiency: Lower efficiency compared to crystalline panels.
- Aesthetics: More adaptable in terms of appearance.

Thin-Film Solar Panels



- Efficiency: High, as they can capture sunlight from both sides.
- Reflection: Utilize reflected sunlight from the ground or nearby surfaces.
- Aesthetics: Similar appearance to monocrystalline panels.

PERC Solar Panels (Passivated Emitter Rear Cell)



- Flexibility: Lightweight and flexible, suitable for unconventional surfaces.
- Efficiency: Lower efficiency compared to crystalline panels.
- Aesthetics: More adaptable in terms of appearance.

Smart Solar Panels



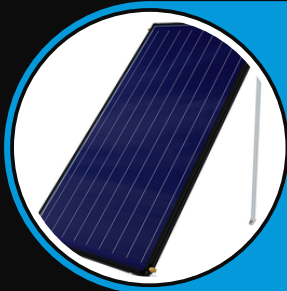
- Monitoring: Integrated technology for real-time monitoring and control.
- Efficiency: Varies, but often includes advanced features for optimized performance.
- Connectivity: Can be part of a smart home energy system.



Solar Heating

There are several types of solar water heaters for homes, each designed to harness solar energy for efficient water heating.

Flat Plate Collector Systems



- Design: Consists of flat, rectangular plates with an absorber layer to capture sunlight.
- Efficiency: Effective for moderate temperatures and climates.
- Applications: Well-suited for residential hot water needs.

Evacuated Tube Collector Systems



- Design: Utilizes rows of glass tubes containing a heat-absorbing fluid, maintaining efficiency in various weather conditions.
- Efficiency: Higher performance in colder climates and indirect sunlight.
- Applications: Suitable for residential and commercial water heating.

Batch or ICS Systems



- Design: Simple system where water is heated directly in a collector and stored in an insulated tank.
- Efficiency: Cost-effective but may experience heat loss during cold periods.
- Applications: Common for residential water heating.
- Thermosiphon Systems:

Passive Solar Water Heaters



- Design: Uses gravity and natural principles to circulate water without the need for pumps.
- Efficiency: Relies on simplicity and can be cost-effective.
- Applications: Common in off-grid or remote residential locations.

Indirect or Closed Loop Systems



- Design: A heat-transfer fluid circulates through the collector and transfers heat to the water in the storage tank through a heat exchanger.
- Efficiency: Protects against freezing and can be used in various climates.

Thermosiphon Systems



- Design: Uses natural convection to circulate water through collectors and into a storage tank.
- Efficiency: Relies on gravity and does not require a pump, making it energy-efficient.
- Applications: Suitable for residential use in regions with consistent sunlight.



Solar Lighting

Solar-powered lighting systems are versatile and eco-friendly solutions that harness sunlight to provide illumination. Various types of solar-powered lighting systems cater to different needs and preferences. Here are some common types:

Solar Garden Lights



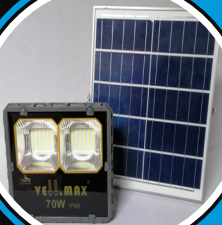
- Application: Designed for outdoor garden and landscape lighting.
- Features: Typically decorative, come in various designs, and are easy to install without wiring.

Solar Street Lights



- Application: Ideal for public and private streets, walkways, and outdoor areas.
- Features: Equipped with high-capacity batteries, dusk-to-dawn sensors, and bright LEDs for efficient street lighting.

Solar Flood Lights



- Application: Suited for illuminating large areas, such as driveways, yards, and outdoor spaces.
- Features: Provide intense and focused lighting, often with motion sensors for added security.

Solar Spotlights



- Application: Used for highlighting specific features in gardens, landscapes, or architectural elements.
- Features: Directional and adjustable to focus light on desired areas.

Solar Security Lights



- Application: Enhance security around homes, garages, or entrances.
- Features: Equipped with motion sensors to detect movement and illuminate the area, acting as a deterrent.

Solar Lanterns



- Application: Versatile and portable lighting for camping, outdoor events, or as decorative fixtures.
- Features: Come in various styles, often mimic traditional lantern designs, and are easily transportable.



Commercial Solutions

Commercial Solar Power Solutions

At Icy Flame Solar Tech, our suite of Commercial Solar Solutions is designed to empower businesses with efficient, cost-effective, and sustainable energy solutions. Whether you're a small enterprise or a large corporation, our tailored offerings cater to the unique energy needs of commercial spaces.



Commercial Solar Water Heaters

Cut operational costs and reduce environmental impact with our high-performance solar water heating systems. Suitable for various commercial applications, including hotels, restaurants, and manufacturing facilities. Efficient heating solutions for both hot water needs and industrial processes.



Industrial Solar Lighting Systems

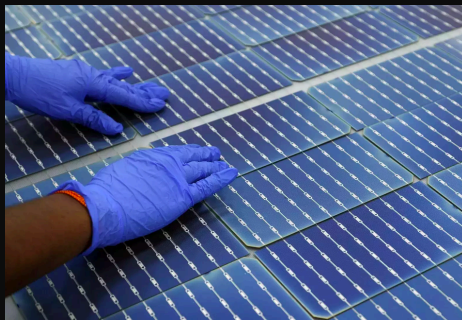
Illuminate your commercial space with energy-efficient and sustainable solar lighting solutions. Tailored designs for parking lots, warehouses, and outdoor areas. Dusk-to-dawn sensors and motion detection options for enhanced efficiency and security.



Innovation & Technology

At Icy Flame Solar Tech, our commitment to excellence extends beyond the present, driving us to continuously push the boundaries of innovation in solar technology. We firmly believe that staying at the forefront of technological advancements is paramount to delivering cutting-edge solutions that redefine the possibilities of solar energy.

Continuous Research and Development



Our dedicated team of researchers and engineers works tirelessly to explore the latest advancements in solar technology. Through ongoing research and development initiatives, we aim to enhance the efficiency, reliability, and sustainability of our solar solutions.

Adoption of Emerging Technologies



We embrace emerging technologies that have the potential to revolutionize the solar industry. From advanced materials to breakthroughs in energy storage, we are committed to integrating the latest innovations into our product offerings.

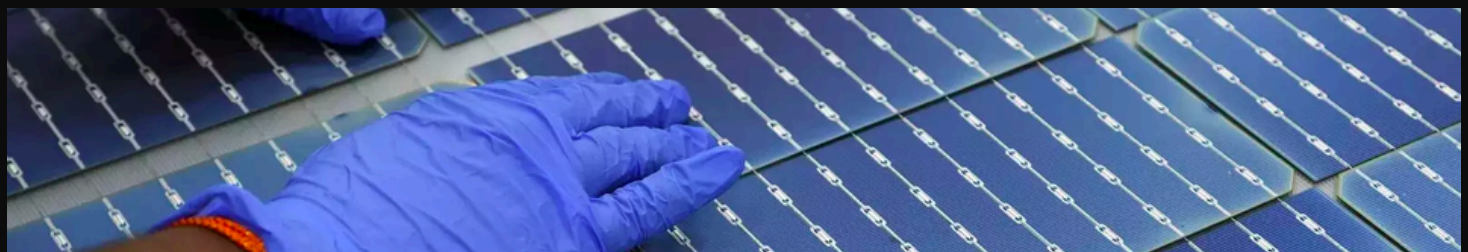
Environmental Responsibility in Innovation



The Future of Sustainable Energy:
Emerging Technologies and Innovations

Our innovation journey is rooted in a commitment to environmental responsibility. We seek to develop technologies that not only advance the solar industry but also contribute to a more sustainable and eco-friendly future.

Smart Solar Solutions



In the era of connectivity, we are leading the charge in the development of smart solar solutions. Our commitment to technological innovation includes the integration of smart features that enable real-time monitoring, remote control, and data-driven insights. This not only enhances the user experience but also allows for more effective management of solar energy systems.



Projects Showcase

our commitment to excellence is best showcased through the successful implementation of a diverse range of solar projects. Each project represents a testament to our expertise, innovation, and unwavering dedication to a sustainable energy future. Explore a glimpse of our impactful projects:

Commercial Solar Integration



Industrial Solar Powering



Community Solar Farm





ICY FLAME SOLAR TECH

Clean energy revolution



Our Contact



+254706 355 299 / +254710 478 806



info@icyflame.co.ke



www.icyflame.co.ke



K - Mall off Kiambu Road ^{1st} Floor Suite FF - 12



Po Box 2277 - 00606 Westlands